

S-Class Coupe

Brief overview

Mercedes-Benz



Cockpit – overview



- ① **Seat functions**
 - Adjusts the seat electrically
 - Seat heating
 - Seat ventilation
 - Adjusts the front passenger seat
 - Memory function and presets **1 2 3**
 - AIRSCARF
- ② **Driver assistance systems**
 - Active Steering Assist
 - Active Lane Keeping Assist
 - Night View Assist
 - Head-up Display
 - Rear window roller sunblind
 - Seat belt extender
- ③ **Light switch**
 - Adjusts the instrument lighting
- ④ Adjusts the air vents: open or closed
- ⑤ Multifunction steering wheel control panels
- ⑥ DIRECT SELECT lever for transmission position

⚠ WARNING Make sure that you read the entire Operator's Manual. Otherwise, you may not recognize dangers.

Cockpit – overview

- ⑦ Multimedia system display
- ⑧ Rocker switches for automatic climate control
- ⑨ **Multimedia system controller with**
 - Seats menu
 - Navigation menu
 - Radio menu
 - Hazard warning lights
 - Media menu
 - Telephone menu
 - Vehicle menu
 - Back button
 - Shows main functions
- ⑩ Switches the multimedia system on or off
 - Adjusts the volume
 - Press: switches the sound on or off
 - Lowers or raises the head restraints in the rear compartment
 - Deactivates PARKTRONIC

- ⑪ Multimedia system touchpad
- ⑫ **Driving functions**
 - ECO start/stop function
 - DYNAMIC SELECT
 - Vehicle level
 - Active Parking Assist
- ⑬ Start/stop button
- ⑭ Electric parking brake
- ⑮ Opens or closes the trunk lid
- ⑯ Door control panel with controls for power windows and exterior mirror settings
- ⑰ **Door handle**
 - Locks the vehicle centrally
 - Unlocks the vehicle centrally



Overhead control panel

- ① Buttons for interior lighting and reading light
- ② Button for Mercedes me connect*
- ③ SOS button* (Mercedes-Benz emergency call system)
- ④ Panoramic roof Roller sunblind
- ⑤ MAGIC SKY CONTROL

* Not available in all countries

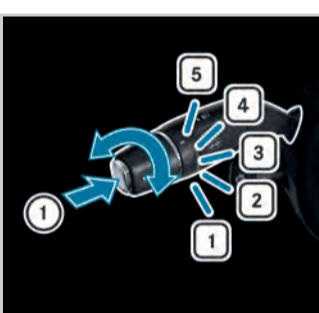
Note that your vehicle may not be equipped with all of the features described.

Lever on the steering wheel



Overview

- ① Combination switch for turn signal lamp, high-beam headlamps and windshield wipers
- ② Lever for electrical steering column adjustment and steering wheel heater



Combination switch – windshield wiper functions

- ① Single wipe
- Wipes with washer fluid
- 1** Windshield wipers off
- 2** Intermittent wiping, normal
- 3** Intermittent wiping, frequent
- 4** Continuous wiping, slow
- 5** Continuous wiping, fast

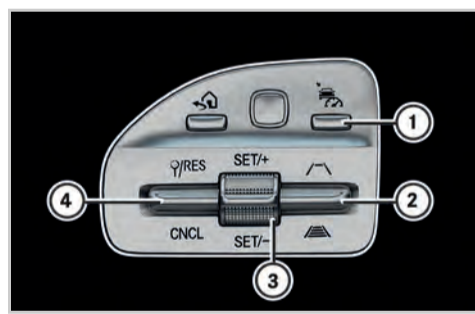


Combination switch – lighting functions

- ① Adaptive Highbeam Assist
- ② Turn signal lamp, right
- ③ Headlamp flashing
- ④ Turn signal lamp, left

⚠ WARNING Make sure that you read the entire Operator's Manual. Otherwise, you may not recognize dangers.

Active Distance Assistant DISTRONIC



Activating/deactivating

- ① Activates Active Distance Assist DISTRONIC
- ③ Active Distance Assist
- Activates DISTRONIC with current speed
- ④ Activates with the stored speed/pulls away with Active Distance Assist DISTRONIC
- Deactivates Active Distance Assist DISTRONIC



Changing the speed/distance

- ② Increases the specified minimum distance
- Reduces the specified minimum distance
- ③ Increases the speed
- Reduces the speed

Active Distance Assist DISTRONIC maintains a constant speed which has been stored.

Note that your vehicle may not be equipped with all of the features described.

The lowest speed that can be set is 12 mph (20 km/h).

You can change the set speed:

- ▶ **1 mph (1 km/h) step:** briefly press rocker switch ③ up or down.
 - ▶ **5 mph (10 km/h) step:** push rocker switch ③ up or down beyond the pressure point.
- Using rocker switch ②, you can change the specified minimum distance to the vehicle in front. The specified minimum distance depends on the currently driven speed.
- If rocker switch ④ is pressed up twice, Active Distance Assist DISTRONIC is activated with the speed restriction displayed in the instrument cluster.

Climate control



Operating possibilities for climate control

- You can set automatic climate control using:
- The rocker switches on control panel ① of the center console
 - The climate control menu of the multimedia system
- Air-conditioning function bar ② shows the most important settings and the status of automatic climate control.

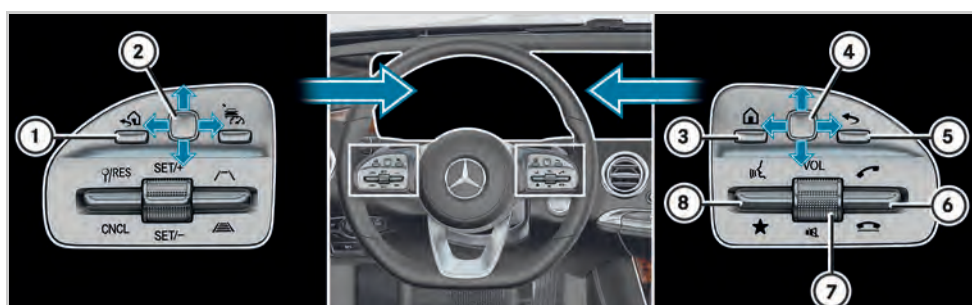
Automatic climate control panel

- AUTO** Sets climate control to automatic mode
- Sets the temperature
- Sets the airflow
- At level 0: climate control off
- Air-recirculation mode
- The air in the vehicle interior is recirculated.
- In air-recirculation mode, the windows can fog up more quickly.
- Defrosts the windshield
- MENU** Calls up the climate control menu
- If you press and hold the **MENU** button for approximately 4 seconds, automatic climate control is reset to the basic settings.
- Defrosts the rear window
- A/C** Cooling with air dehumidification

Climate control menu of the multimedia system

- ▶ **To call up the climate control menu:** press the **MENU** rocker switch on the control panel up or down.
- **A/C** – Activates/deactivates the cooling and air dehumidification functions of the automatic climate control
- **Climate Mode** – Changes the air flow
- **Air Distribution** – Sets the air distribution for the driver and front passenger
- **Footwell Temperature** – Adjusts the temperature for the footwell separately
- **Rear** – Operates the automatic climate control in the rear
- **SYNC** – Changes settings for all climate zones in the vehicle simultaneously
- **Ionization** – Freshens the air in the vehicle interior using ionization
- **Air Freshener** – Sets the intensity of the perfume atomizer





Operating the menu of the on-board computer

- ① Back button for the on-board computer
- ② Touch Control for the on-board computer
Press: confirms the selection

Operating the multimedia system

- ③ Main menu of the multimedia system
- ④ Touch Control for the multimedia system
Press: confirms the selection
- ⑤ Back button for the multimedia system
- ⑥ Accepts a telephone call
 Rejects a telephone call
Ends a call

⚠ WARNING Make sure that you read the entire Operator's Manual. Otherwise, you may not recognize dangers.

- ⑦ Adjusts the volume
Press: switches the sound on or off
- ⑧ Starts a dialog with the Voice Control System or cancels the current Voice Control System voice command
- Displays favorites

Voice Control System

Starting a dialog

The Voice Control System allows you to comfortably operate the majority of the multimedia system's functions.

▶ **To say a voice command:** press the button and speak a voice command after the signal tone.

i If a mobile phone is connected with the vehicle via Bluetooth® and you press and hold the button, the voice assistant of the mobile phone will be started.

Voice Control System help functions

- **General information:**
Say the "Help Voice Control System" voice command.
- **Help for the current function:**
Say the "Help" voice command.
- **Help for a specific system:**
Say the voice command for the desired system, e.g. "Help telephone".

Examples

Voice commands for Navigation

- "Navigate to Woodward Avenue, Detroit"
Starts route guidance to the named address.
- "Navigate to contact John Doe"
Starts route guidance to a contact in the address book.
- "Nearest gas station"
Further categories are also available: restaurant, parking lot and rest area.

Voice commands for telephone

- "Call Jane Doe"
Calls the number of a contact in the address book.
- "Latest calls"
Shows the latest calls.

Voice commands for audio mode

- "Station Z100"
Calls up stations which are in range or stored stations.
- "Play Moonlight Sonata"
Plays the named media file. All tracks available in the system can be used.

Note that your vehicle may not be equipped with all of the features described.

Overview of the multimedia system



You can operate the multimedia system with the controller, touchpad or Touch Control.

- ▶ **Controller:** turn or slide in the direction of the desired entry.
- ▶ Slide to the left or right in order to open a menu.
- ▶ Confirm your choice by pressing the controller.

- ▶ **Touchpad:** swipe in the direction of the desired entry.
- ▶ Swipe to the left or right in order to open a menu.
- ▶ Confirm your selection by pressing.

- Press briefly: returns to the previous display
Press and hold: calls up main functions
- Calls up main functions
- Rapid access to audio sources

⚠ WARNING Make sure that you read the entire Operator's Manual. Otherwise, you may not recognize dangers.

Favorites

Favorites allow you to quickly call up applications which you use regularly.

- ▶ **To call up the menu:** press the button. The main functions are displayed.
- ▶ Navigate downwards. The favorites bar is shown.

- ▶ **To create your own favorite:** select the desired function in the multimedia system.
- ▶ Press and hold the button until the favorites are displayed.
- ▶ Add your own favorites at the desired position.

Personalization

You can store your own personal settings for the multimedia system in a user profile.

- ▶ **To call up the menu:** press the button.
- ▶ Select System ▶ Personalization.

Operating the multimedia system

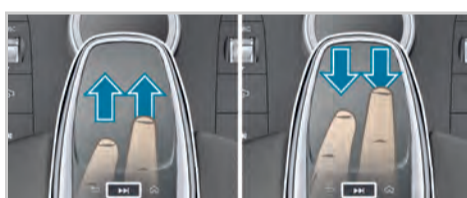


Zooming the map

- ▶ **Touchpad:** move two fingers apart or together.



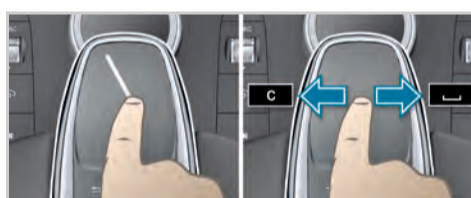
- ▶ **Controller:** turn left or right.



Rapid access to audio sources

Depending on the audio source to which you are currently listening, you can move to the next radio station or music track.

- ▶ **To open the access bar:** swipe up with two fingers.
- or
- ▶ Press the button on the touchpad.
- ▶ **To select the previous or next station/music track:** using a single finger, swipe up or swipe down.
- ▶ **To close the access bar:** swipe down with two fingers or press on the touchpad.



Handwriting recognition

You can enter individual letters.

- ▶ **To delete** : swipe to the left.
- ▶ **To insert a space** : swipe to the right.

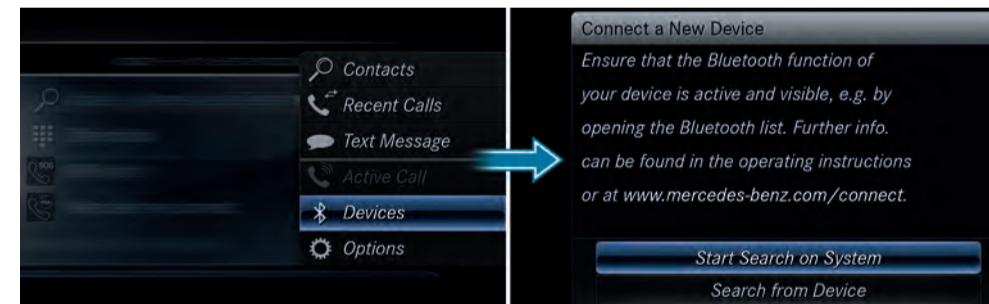
Quickly storing radio stations

If you are listening to the radio and the **Radio** menu is shown in the multimedia system:

- ▶ Press and hold the controller or touchpad or the right-hand Touch Control on the multifunction steering wheel. A tone confirms the save.

Note that your vehicle may not be equipped with all of the features described.

Establishing a Bluetooth® connection



Requirement

- Bluetooth® is switched on on the mobile phone and visible for other devices (see the manufacturer's operating instructions).
- Bluetooth® is switched on on the multimedia system.

Searching for a mobile phone

- ▶ Press the button on the center console.
 - ▶ Select **Devices** ▶ **Connect a New Device**.
 - or
 - ▶ Select **Start Search on System**. The available devices are shown in the display.
- If your mobile phone is not found, select **Search from Device**.

Connecting a mobile phone

- ▶ Select the desired mobile phone. A code is displayed in the multimedia system and on the mobile phone.
- ▶ **If the codes match:** Confirm with **Yes** on the multimedia system.
- ▶ Confirm the code on the mobile phone.

i You can simultaneously connect two telephones with your system.

Further information

Detailed information on Bluetooth® connections with your mobile phone can be found at:

www.mercedes-benz.com/connect



⚠ WARNING Make sure that you read the entire Operator's Manual. Otherwise, you may not recognize dangers.

Further information on your vehicle

Further information

You can obtain further information on your vehicle at:

<http://www.mbusa.com>



How-to videos



Operator's Manuals



Connecting external media sources

- ① SD slot
- ② USB ports

The USB connection for Apple CarPlay™ and Android Auto™ is marked with the symbol.



HANDS-FREE ACCESS

If you carry the KEYLESS-GO key on your person, you will be detected by a sensor. Do not touch the bumper and maintain a distance of around 12 in (30 cm).

- ▶ **To open or close:** kick into the sensor detection area below the bumper.

Note that your vehicle may not be equipped with all of the features described.